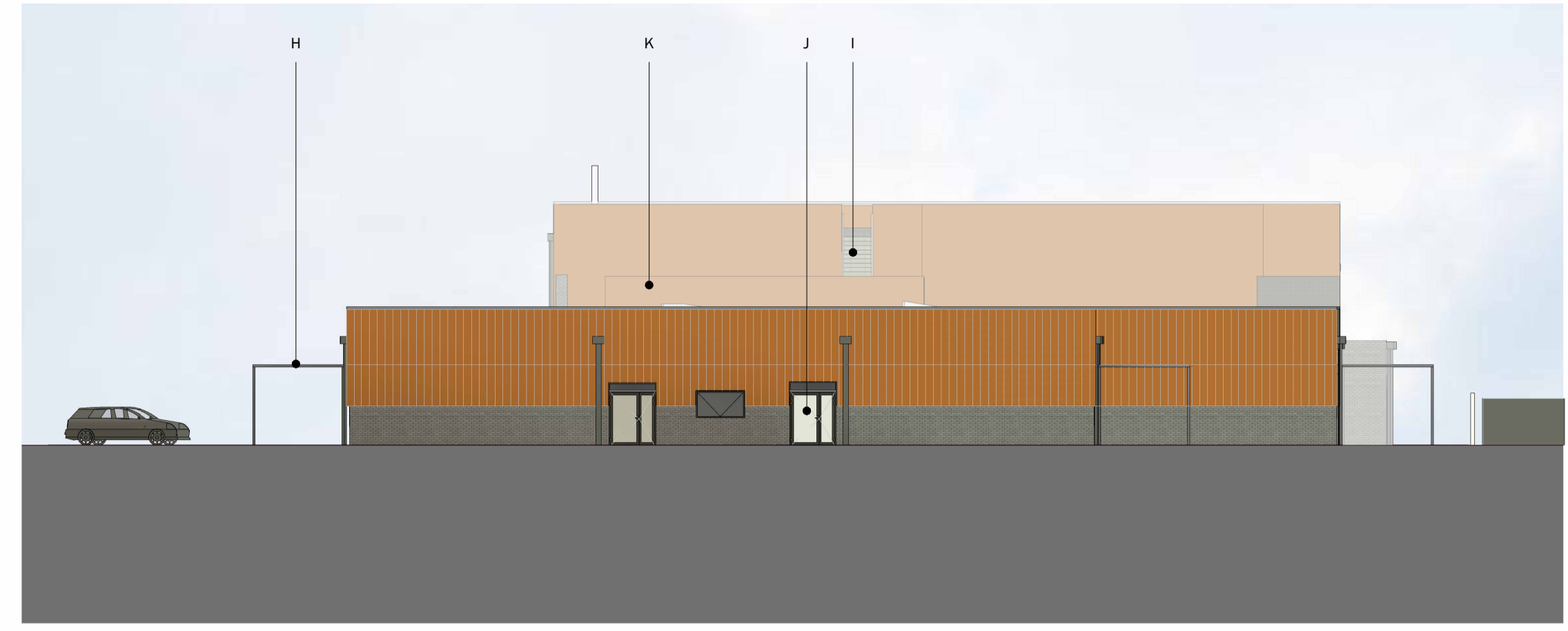




1 Proposed East Elevation
Scale 1 : 200



2 Proposed West Elevation
Scale 1 : 200



3 Proposed North Elevation
Scale 1 : 200

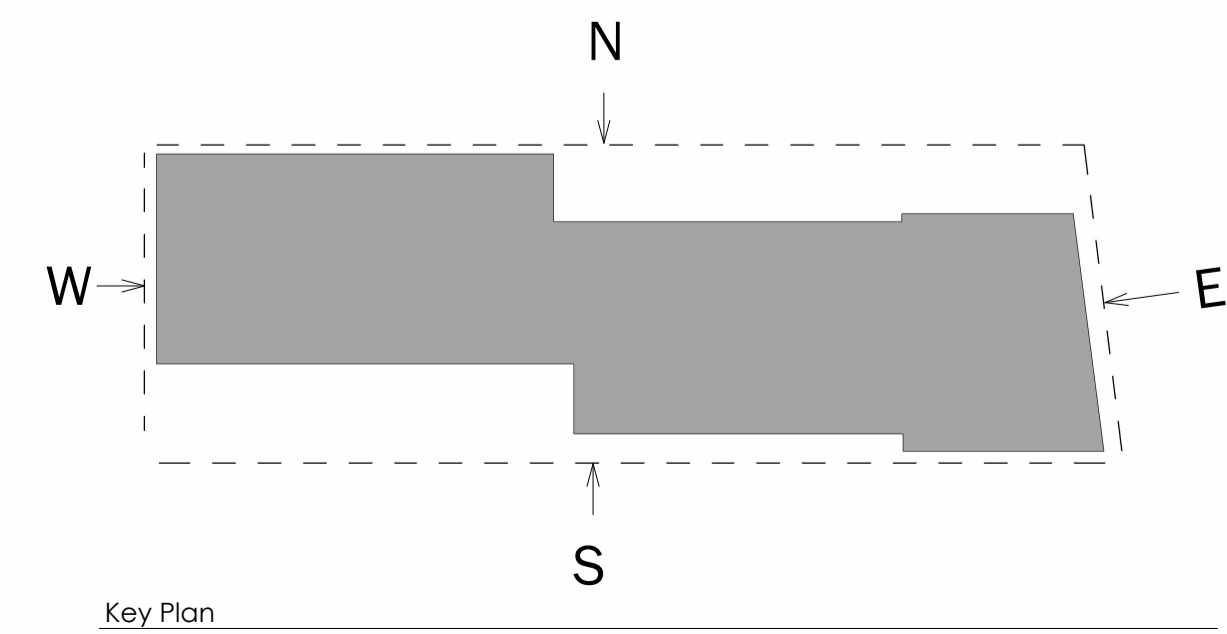


4 Proposed South Elevation
Scale 1 : 200

A- Aluminium Cladding PPC powder coated.
Lower band grey-Blue. Upper band Copper orange
B- 500mm metal school sign. Colour tbc
C- Aluminium window PPC powder coated. Top hung grey
D- Main entrance clear glazing. Frame grey

E- Opaque glazing panel. Frame grey
F- Louvres above glazing grey
G- Main entrance polycarbonate canopy. Frame grey
H- Classroom polycarbonate canopy. Frame grey
I- Upper roof maintenance galvanised metal stairs

J- PPC powder coated glazed doors. Colour grey
K- Roof plant acoustic partitions. Cladding as per point A.
L- Metal rectangular downpipes with hoppers. grey
M- Brick plinth -grey concrete



Rev	Date	Description	Initials
Client			
Willmott Dixon			
Project Name			
Oxlow Bridge SEND school			
Drawing Title			
Proposed Elevations			
Issue Status			
PLANNING ISSUE			
Designed	Drawn	Checked	Approved
VO	VO	CG	CG
Scale & Paper Size			Date Originated
1:200 @ A1			24/10/23
Drawing Number			
Project	Originator	Volume	Level
FS0704	3BM	ZZ	ZZ
Number		Subsidiary	Revision
2200P		S08	P06
Architecture + Planning			
Unit LM07 G01			
The Leather Market			
Weston Street			
London, SE1 3ER			
www.3bm.co.uk			